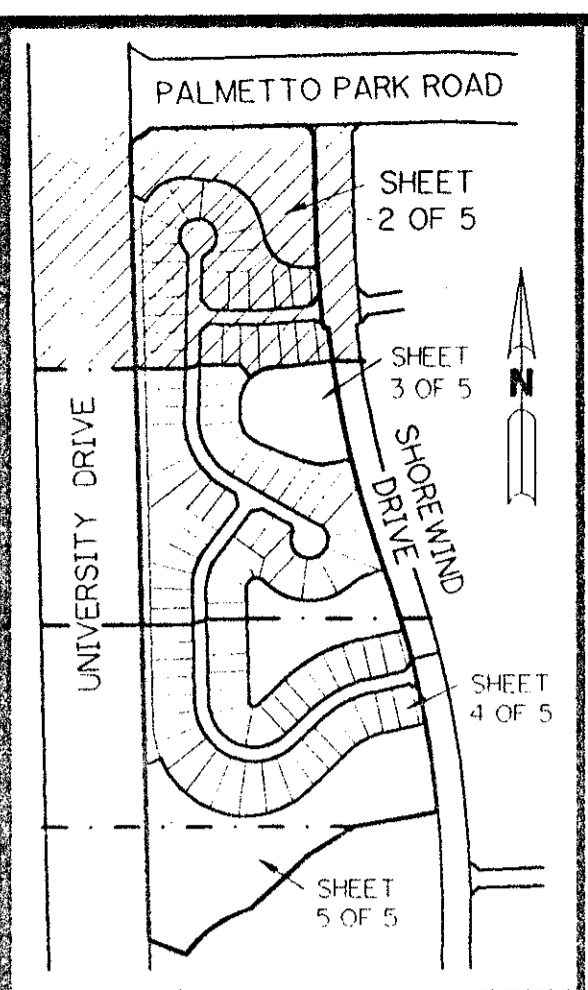


# BOCA WINDS - PARCEL G

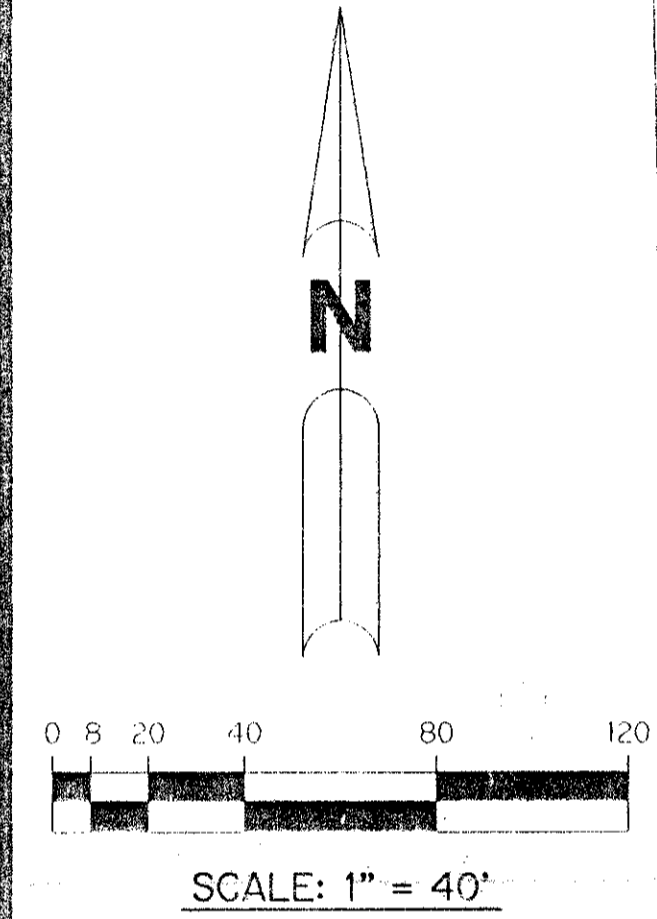
A PARCEL OF LAND LYING IN SECTIONS 22 AND 27, TOWNSHIP 47 SOUTH, RANGE 41 EAST, AND BEING A REPLAT OF A PORTION OF TRACTS 15 AND 16, FLORIDA FRUITLANDS COMPANY'S SUBDIVISION NO. 2, AS RECORDED IN PLAT BOOK 1, PAGE 102, PUBLIC RECORDS OF PALM BEACH COUNTY, FLORIDA.

SHEET 2 OF 5 JANUARY, 1994

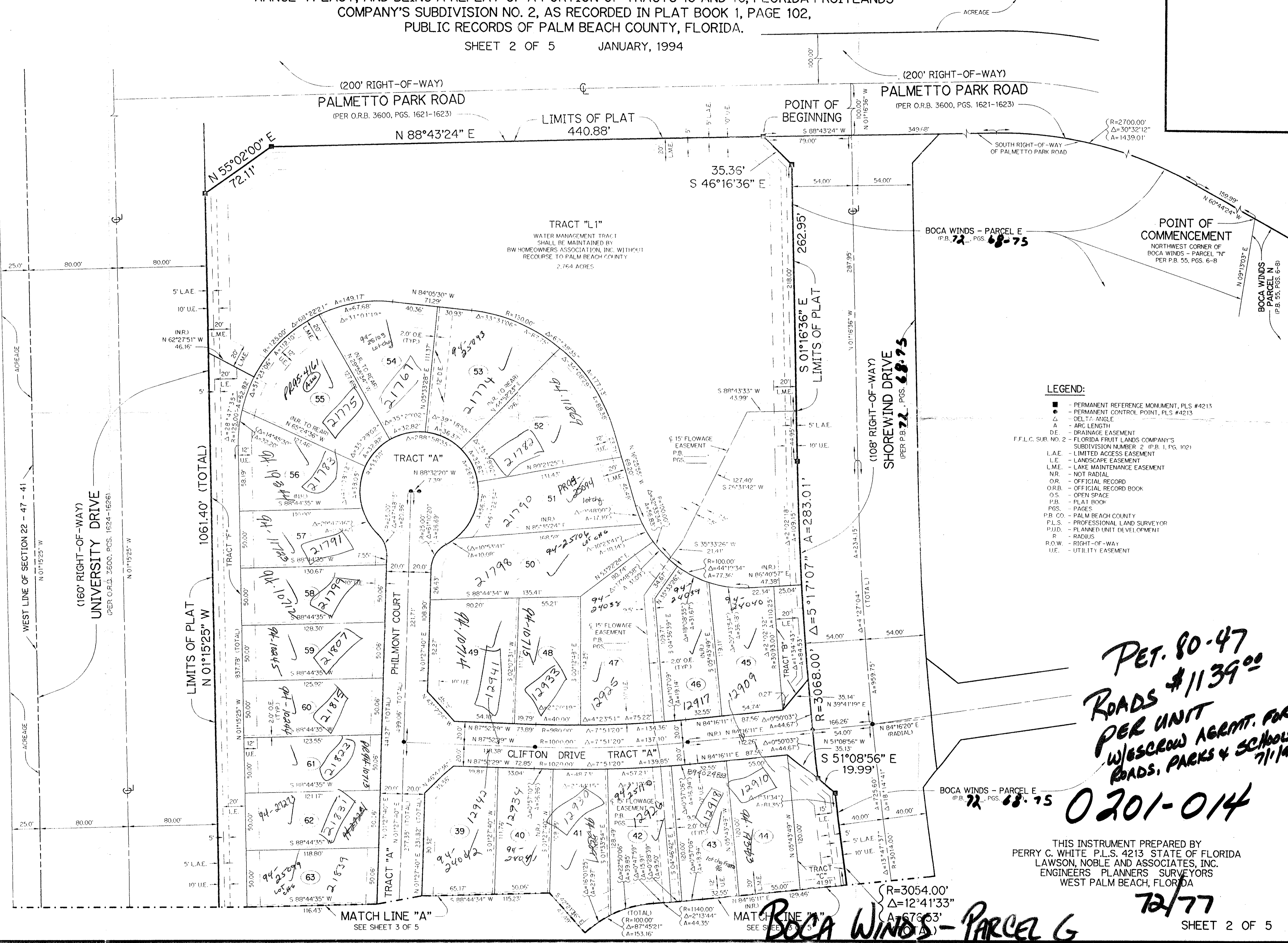


KEY MAP

NTS



SCALE: 1" = 40'



**LEGEND:**

- - PERMANENT REFERENCE MONUMENT, PLS #4213
- - PERMANENT CONTROL POINT, PLS #4213
- ∠ - DELTA ANGLE
- A - ARC LENGTH
- DE - DRAINAGE EASEMENT
- F.F.L.C. SUB. NO. 2 - FLORIDA FRUITLANDS COMPANY'S SUBDIVISION NUMBER 2 (P.B. 1, P.G. 102)
- L.A.E. - LIMITED ACCESS EASEMENT
- L.E. - LANDSCAPE EASEMENT
- L.M.E. - LAKE MAINTENANCE EASEMENT
- N.R. - NOT RADIAL
- O.R. - OFFICIAL RECORD
- O.R.B. - OFFICIAL RECORD BOOK
- O.S. - OPEN SPACE
- P.B. - PLAT BOOK
- PGS. - PAGES
- P.B. CO. - PALM BEACH COUNTY
- P.L.S. - PROFESSIONAL LAND SURVEYOR
- P.U.D. - PLANNED UNIT DEVELOPMENT
- R. - RADIUS
- R.O.W. - RIGHT-OF-WAY
- U.E. - UTILITY EASEMENT

PARCEL G  
 SUBDIVISION # BOCA WINDS  
 BOOK 72 PAGE 77  
 FLOOD HAZ. MAP #100B  
 ZONING RT  
 QUAD # GA  
 SE 80-47 ZIP CODE 33428  
 SUB NAME BOCA WINDS 33433

72Z T7B

PET. 80-47  
 ROADS \$1139<sup>00</sup>  
 PER UNIT  
 W/SCREW AGRMT. FOR  
 ROADS, PARKS & SCHOOLS  
 7/1/94

0201-014

THIS INSTRUMENT PREPARED BY  
 PERRY C. WHITE P.L.S. 4213 STATE OF FLORIDA  
 LAWSON, NOBLE AND ASSOCIATES, INC.  
 ENGINEERS PLANNERS SURVEYORS  
 WEST PALM BEACH, FLORIDA

BOCA WINDS - PARCEL G